



## 30-E 6th Road

30-32 6th Rd, Woburn, MA 01801



**Wronka, Ltd.**

Commercial Real Estate Advisors



**Marianne Wronka**

Wronka, Ltd. Commercial Real Estate Advisors  
400 Tradecenter Dr, Suite 5900, Woburn, MA 01801  
[mwronka@wronkaltd.com](mailto:mwronka@wronkaltd.com)  
(781) 229-2233 Ext: 201

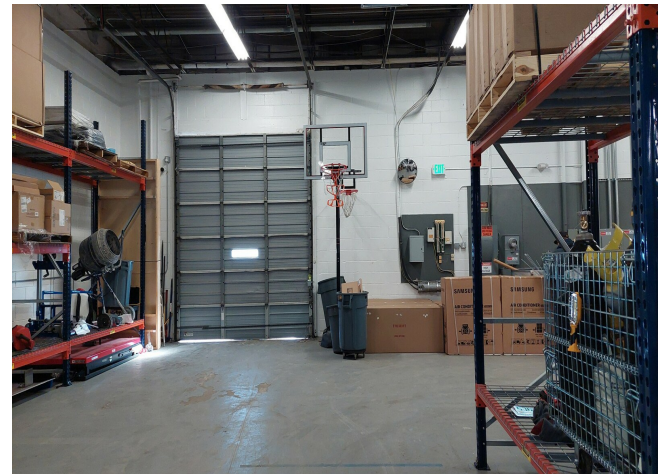
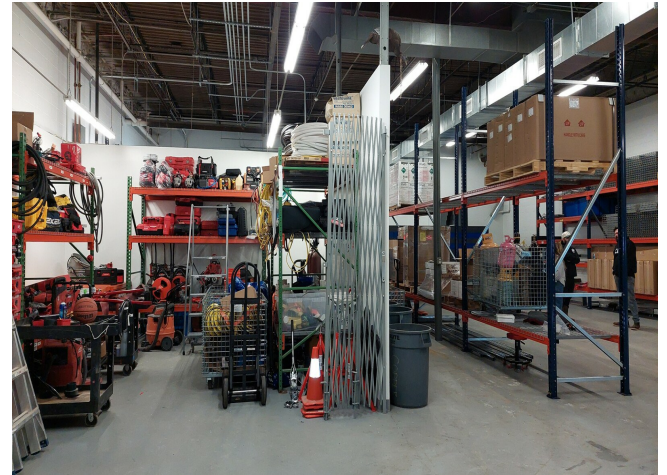


## 30-E 6th Road

\$25.00 /SF/YR

30-E is a versatile Mfg - Warehouse; Heat and a/c; Heavy Power; Drive-in; Warehouse area with a large "Lego" conference room that can be opened up and rest room; Street entry to reception, Private offices; Racking, furniture & fixture may be available...

- Minutes from the junction of I-93 and I-95 /Rte. 128
- Free parking
- Less than 1 mile to Mishawum Commuter Rail



Rental Rate: \$25.00 /SF/YR

Property Type: Industrial

Property Subtype: Warehouse

Rentable Building Area: 37,558 SF

Year Built: 1972

Rental Rate Mo: \$2.08 /SF/MO

## 1st Floor Ste E

Space Available	4,950 SF
Rental Rate	\$25.00 /SF/YR
Date Available	Now
Service Type	Modified Gross
Space Type	Sublet
Space Use	Industrial

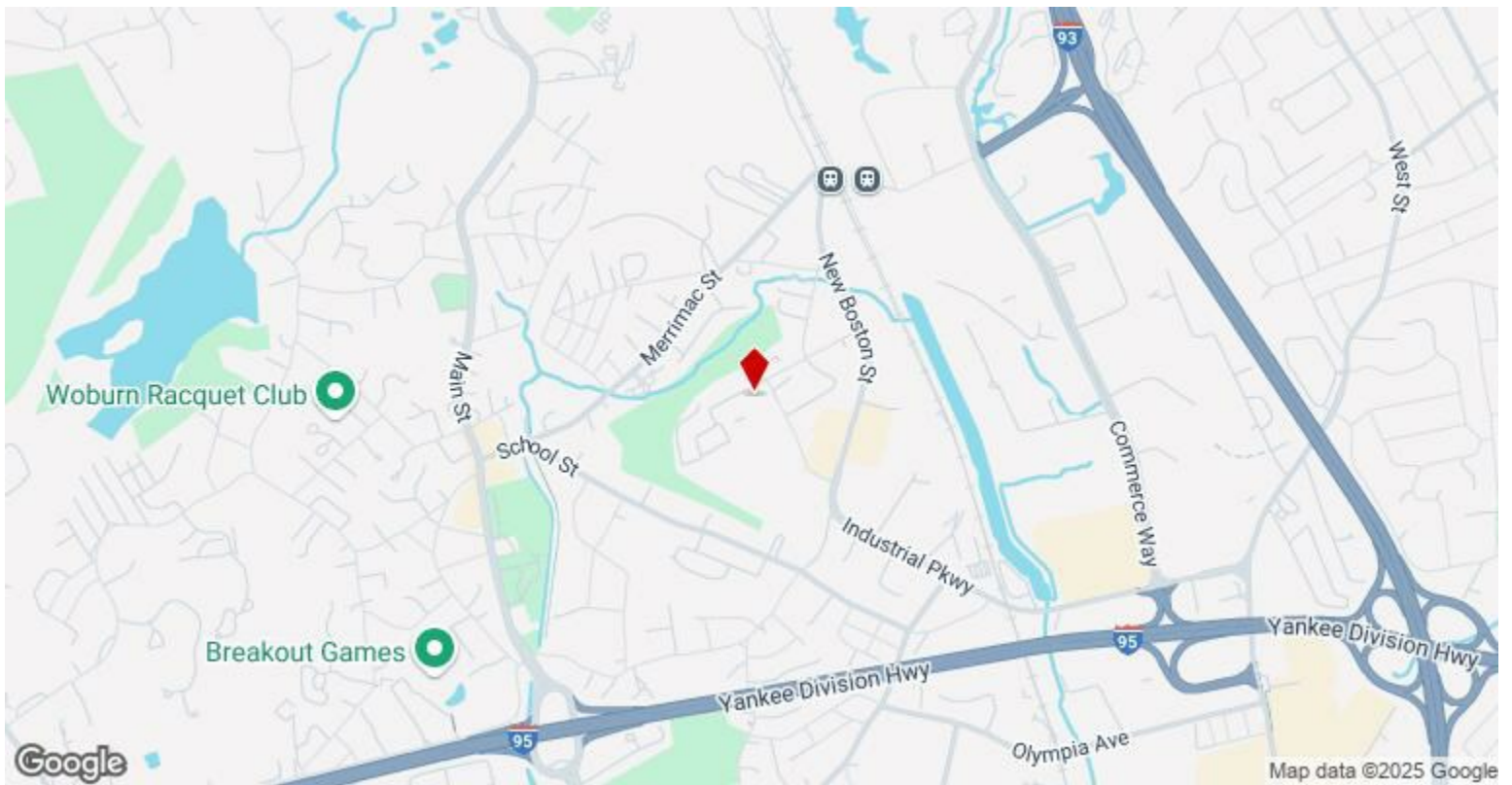
30-E is a versatile Mfg - Warehouse; Heat and a/c; Heavy Power; Drive-in; Warehouse area with a large "Lego" conference room that can be opened up and rest room; Street entry to reception, Private offices; Racking, furniture & fixture may be available

---

## Major Tenant Information

---

Tenant	SF Occupied	Lease Expired
CTM Media Group	-	
One Stop Design Shop	-	
Shear Color Printing Inc	-	February 2019
Visitorfun	-	July 2020



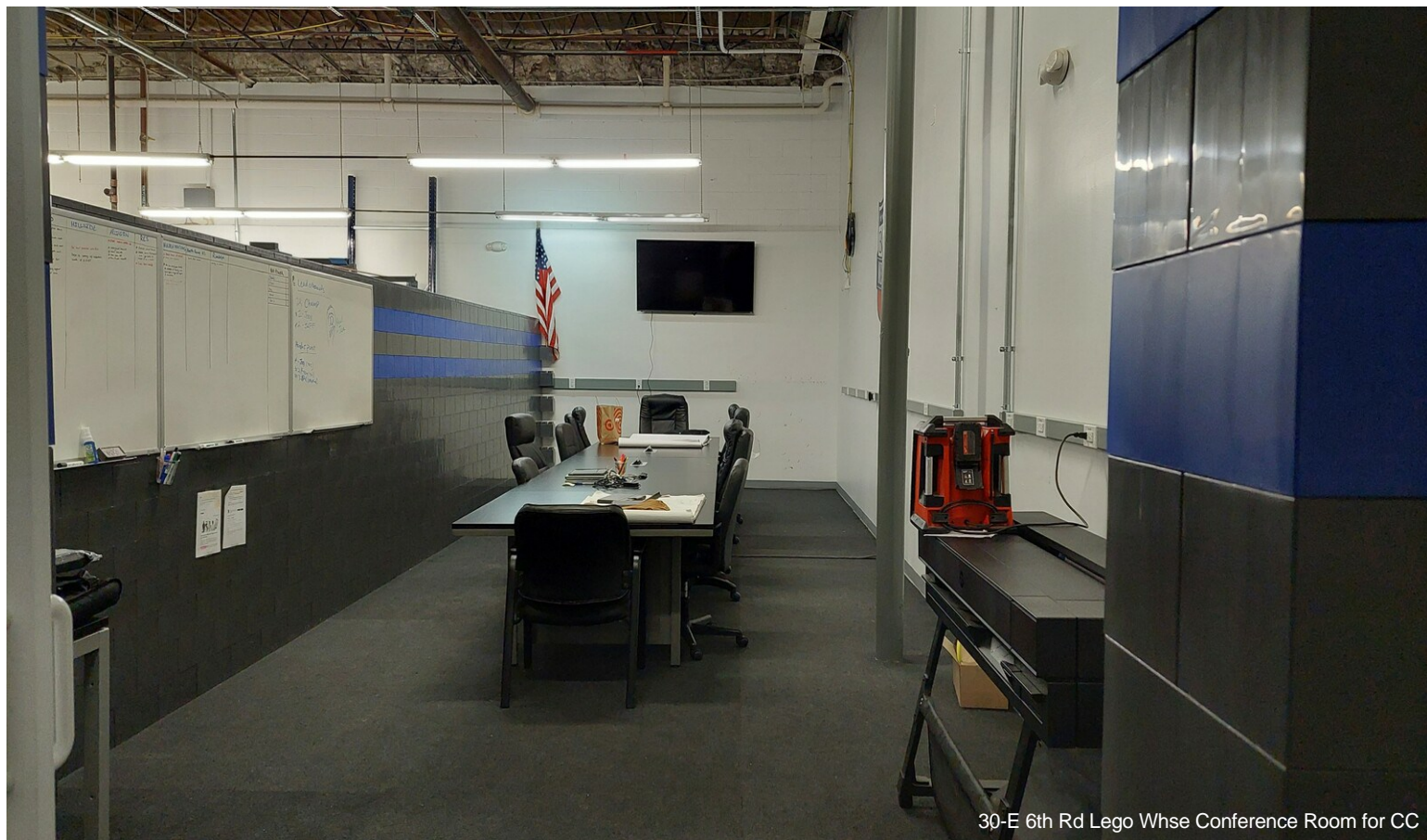
## 30-32 6th Rd, Woburn, MA 01801

30-E is a versatile Mfg - Warehouse; Heat and a/c; Heavy Power; Drive-in; Warehouse area with a large "Lego" conference room that can be opened up and rest room; Street entry to reception, Private offices; Racking, furniture & fixture may be available

# Property Photos



30-E 6th Rd Warehouse Drive-in

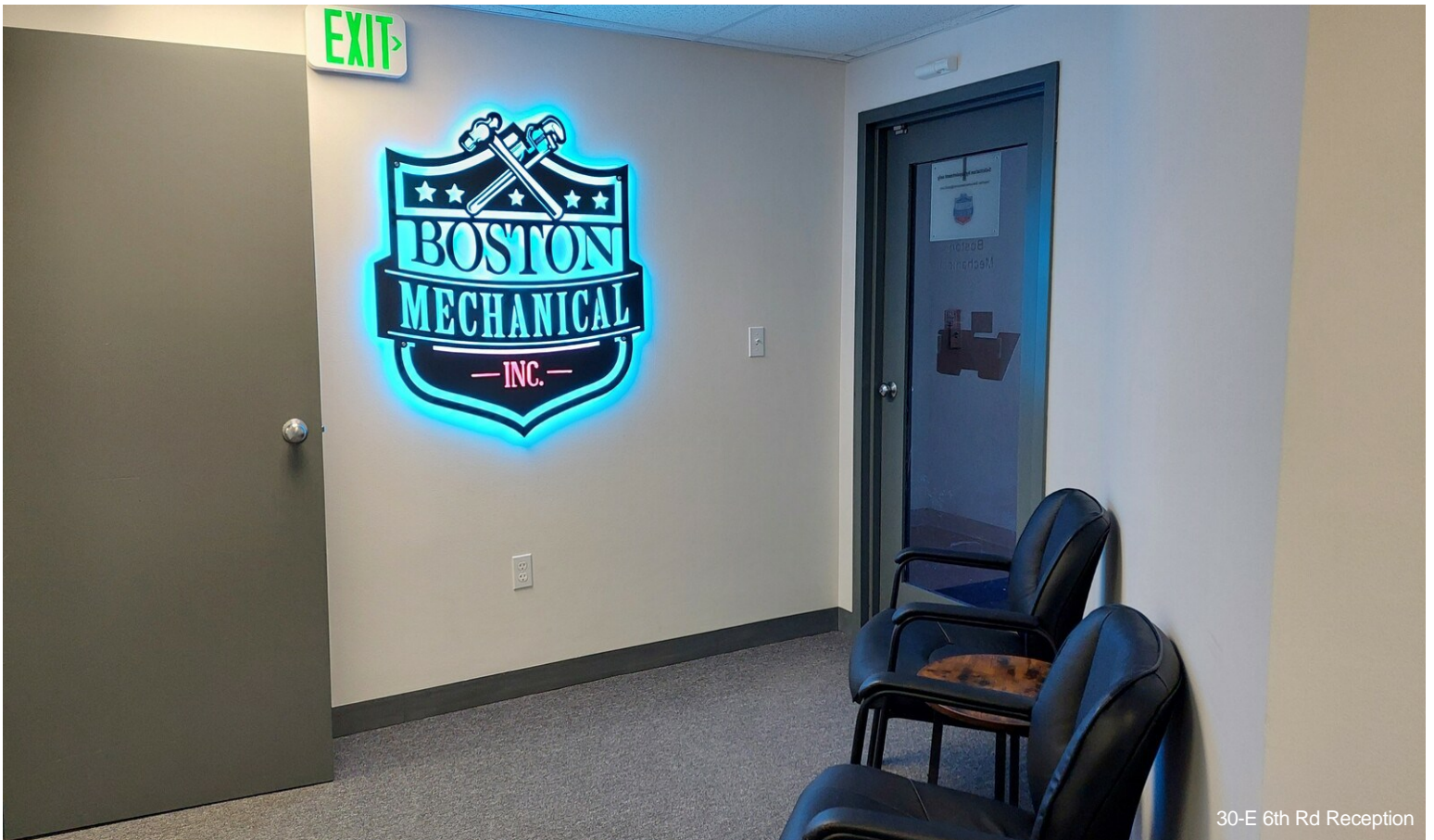


30-E 6th Rd Lego Whse Conference Room for CC

# Property Photos



30-E 6th Rd Heavy Power



30-E 6th Rd Reception

# Property Photos





# Property Photos

