



## Bio Lab Facility

12 Gill St, Woburn, MA 01801



**Wronka, Ltd.**

Commercial Real Estate Advisors



**Marianne Wronka**

Wronka, Ltd. Commercial Real Estate Advisors  
400 Tradecenter Dr, Suite 5900, Woburn, MA 01801  
[mwronka@wronkaltd.com](mailto:mwronka@wronkaltd.com)  
(781) 229-2233 Ext: 201



# Bio Lab Facility

Upon Request

First Class Office Building with convenient access to I-93 and I-95/Rte. 128; Approx. one mile from Mischawum MBTA Commuter Rail Station and from Anderson Regional Transportation Center. Ample Free parking and numerous amenities within minutes from the building.

4,582 Square Feet Turnkey Cell Therapy / Gene Therapy Research, Development and Manufacturing Bio Lab Facility; Move-in Ready. Fully Equipped Brand New Never Used Laboratory ready for clinical scale GMP manufacturing....

- Refrigeration room, Gas room
- Reception, 3 offices, conference room
- Kitchen, restroom
- Short drive to the Kendall Sq - Davis Sq Bio Lab Hub



Rental Rate:	Upon Request
Property Type:	Office
Property Subtype:	Medical
Building Class:	B
Rentable Building Area:	182,603 SF
Year Built:	2000
Walk Score ®:	48 (Car-Dependent)
Transit Score ®:	30 (Some Transit)
Rental Rate Mo:	Upon Request

## 4th Floor Ste 4000

Space Available	4,582 SF
Rental Rate	Upon Request
Date Available	Now
Service Type	Negotiable
Built Out As	Healthcare
Space Type	Sublet
Space Use	Medical

Turnkey Cell Therapy / Gene Therapy Research, Development and Manufacturing Bio Lab Facility; Move-in Ready. Two Fully Equipped Brand New, Never Used Laboratories ready for clinical scale GMP manufacturing.



## 12 Gill St, Woburn, MA 01801

First Class Office Building with convenient access to I-93 and I-95/Rte. 128; Approx. one mile from Mischawum MBTA Commuter Rail Station and from Anderson Regional Transportation Center. Ample Free parking and numerous amenities within minutes from the building.  
4,582 Square Feet Turnkey Cell Therapy / Gene Therapy Research, Development and Manufacturing Bio Lab Facility; Move-in Ready. Fully Equipped Brand New Never Used Laboratory ready for clinical scale GMP manufacturing.

# Property Photos



12 Gill St. Ste 4000 Bio Lab



12 Gill St.

# Property Photos



12 Gill St. Ste 4000 Bio Lab



12 Gill St. Ste 4000 Bio Lab

# Property Photos



12 Gill St. Ste 4000 Bio Lab



12 Gill St. Ste 4000 Kitchen

# Property Photos



12 Gill St. Aerial



12 Gill St. Ste 4000 Bio Lab



# Property Photos

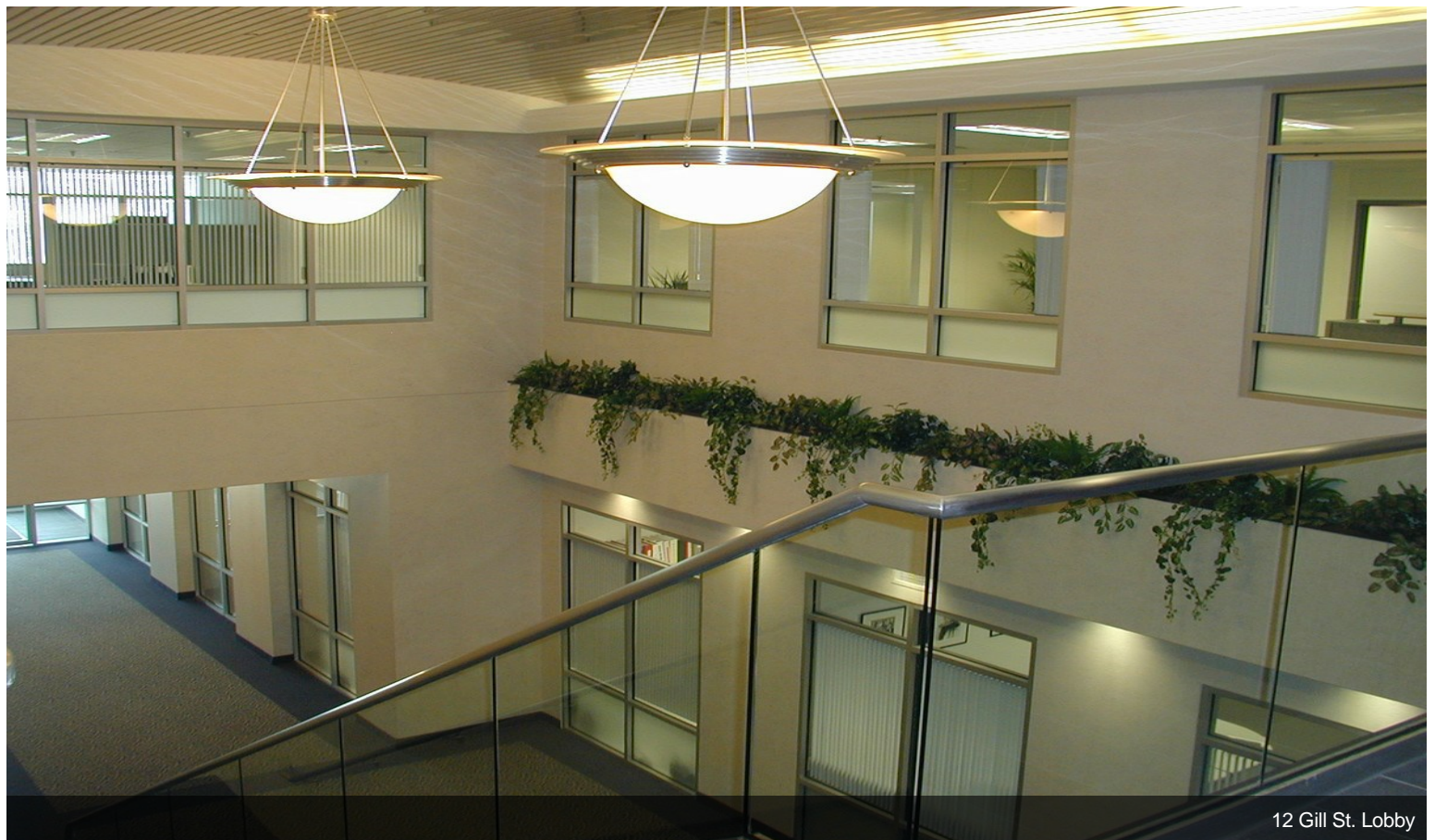


12 Gill St. Ste 4000 Bio Lab



12 Gill St. Ste 4000 Workspace

# Property Photos



# Property Photos

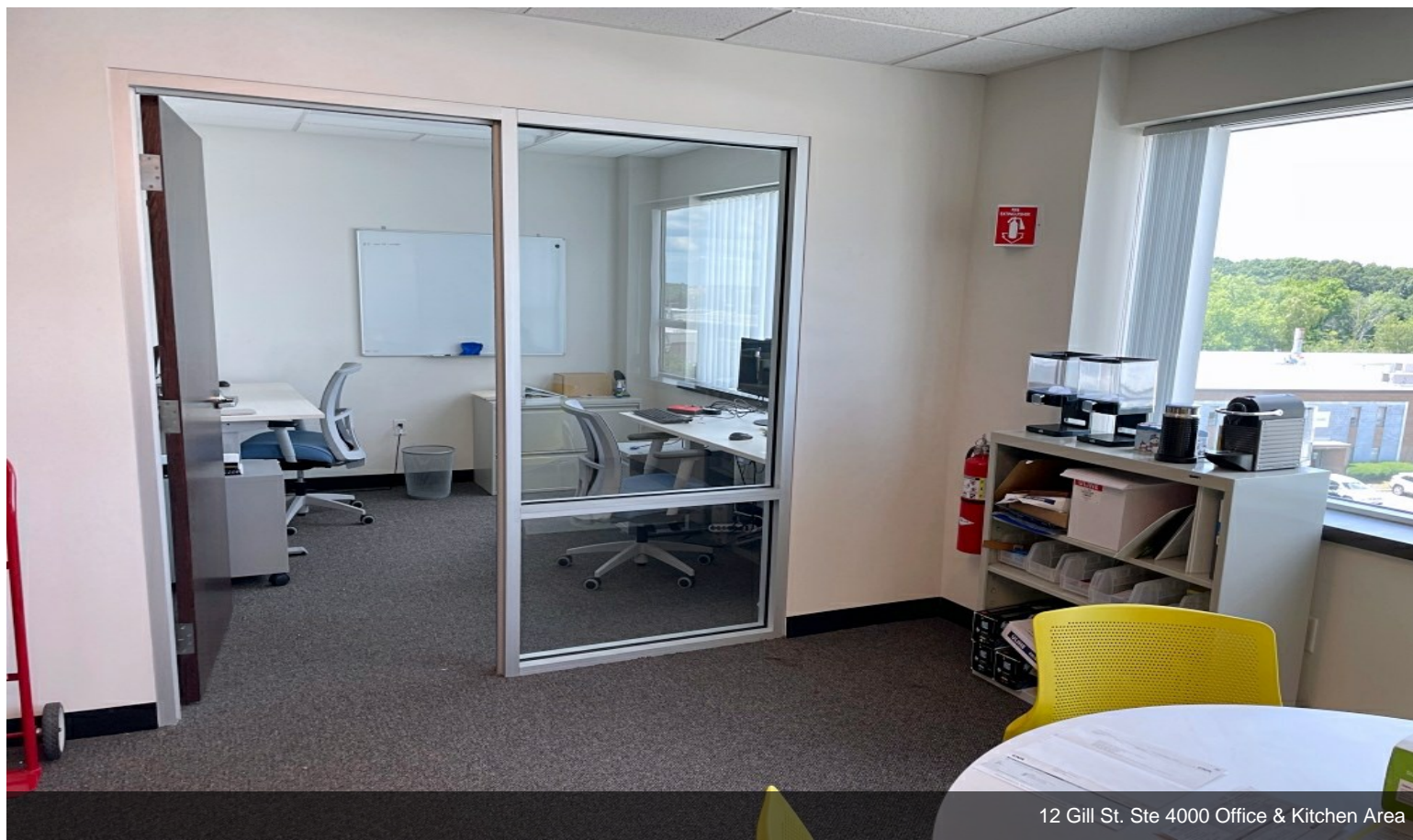


12 Gill St. Ste 4000 Bio Lab

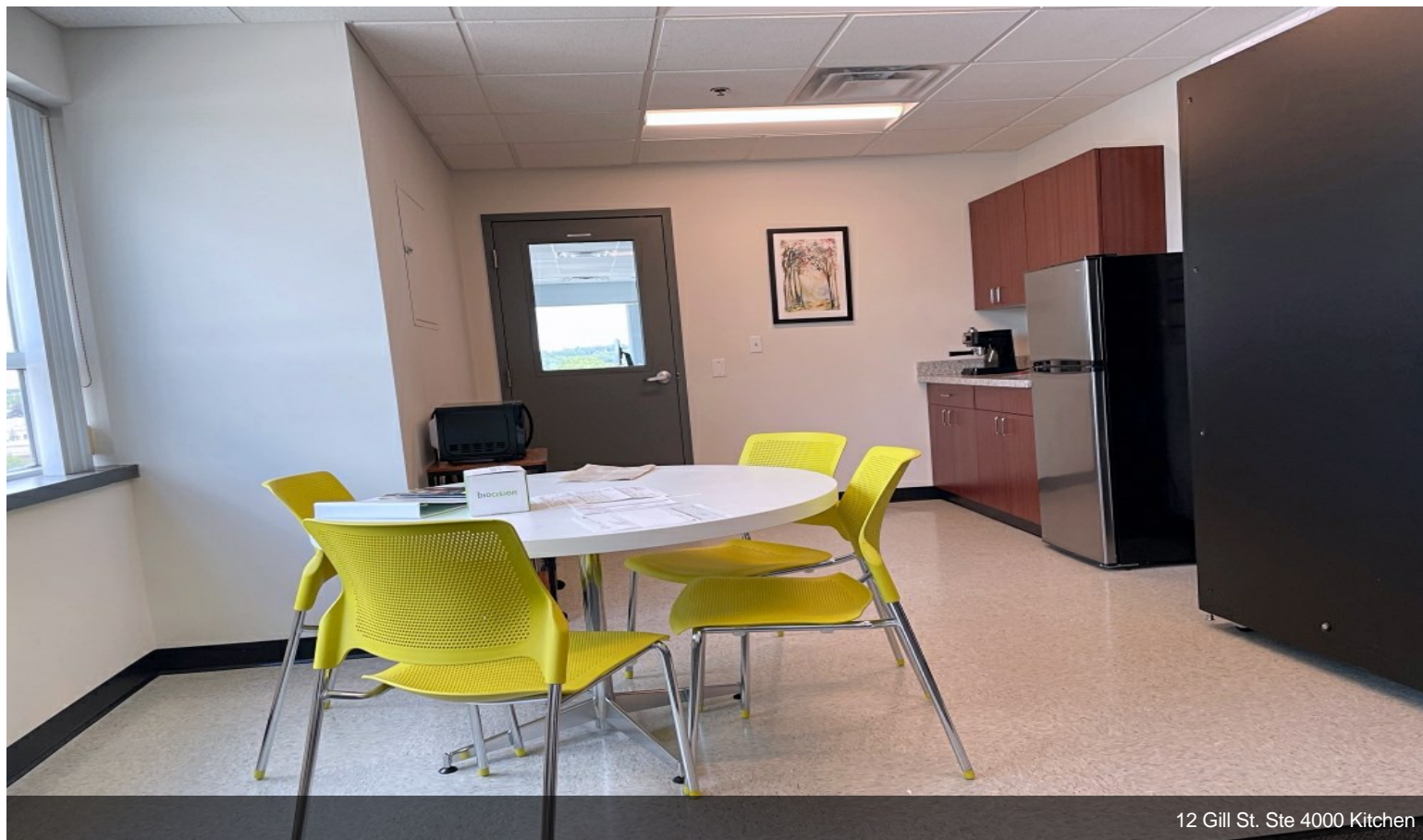


12 Gill St. Ste 4000 Bio Lab

# Property Photos



12 Gill St. Ste 4000 Office & Kitchen Area



12 Gill St. Ste 4000 Kitchen

# Property Photos



12 Gill St. Parking



12 Gill St. Loading Dock