



227 Garfield Ave

227 Garfield Ave, Woburn, MA 01801



Wronka, Ltd.

Commercial Real Estate Advisors



Marianne Wronka

Wronka, Ltd. Commercial Real Estate Advisors
400 Tradecenter Dr, Suite 5900, Woburn, MA 01801
mwronka@wronkaltd.com
(781) 229-2233 Ext: 201

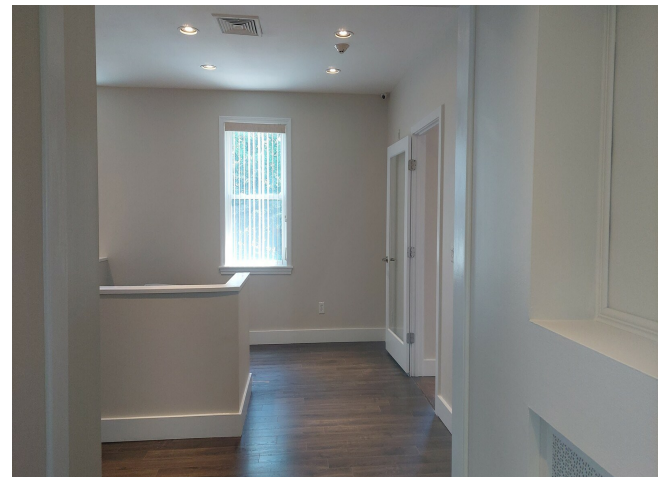


227 Garfield Ave

\$22.00 /SF/YR

2023 Renovation of Flex space on two levels (Office, Fitness, Health & Wellness). Main level reception, plank flooring, LED ceiling lighting and two private restrooms. First level has kitchen with direct entry from parking area and at door parking. Adjacent to and across from Winchester Tennis Club....

- Direct Entry with Parking at Door
- Kitchen & Private Restrooms
- Security System
- Air Conditioned



Rental Rate: \$22.00 /SF/YR

Min. Divisible: 1,450 SF

Property Type: Flex

Property Subtype: Showroom

Building Class: C

Rentable Building Area: 2,900 SF

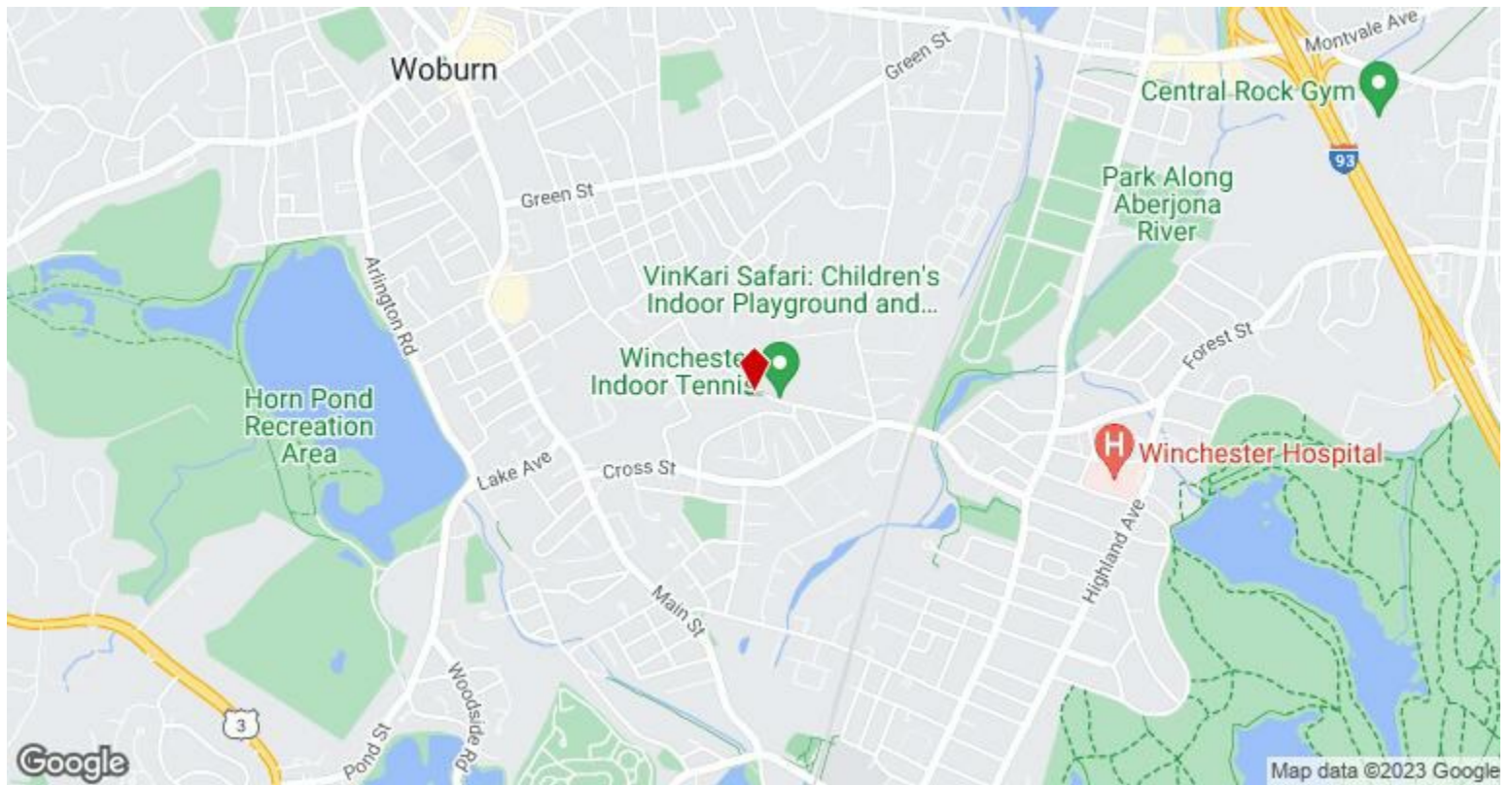
Year Built: 1984

Rental Rate Mo: \$1.83 /SF/MO

1st Floor

Space Available	1,450 - 2,900 SF
Rental Rate	\$22.00 /SF/YR
Date Available	Now
Service Type	Plus All Utilities
Built Out As	Standard Office
Space Type	Relet
Space Use	Office
Lease Term	Negotiable

2023 Renovation of Flex space on two levels (Office, Fitness, Health & Wellness). Main level reception, plank flooring, LED ceiling lighting and two private restrooms. First level has kitchen with direct entry from parking area and at door parking. Adjacent to and across from Winchester Tennis Club.



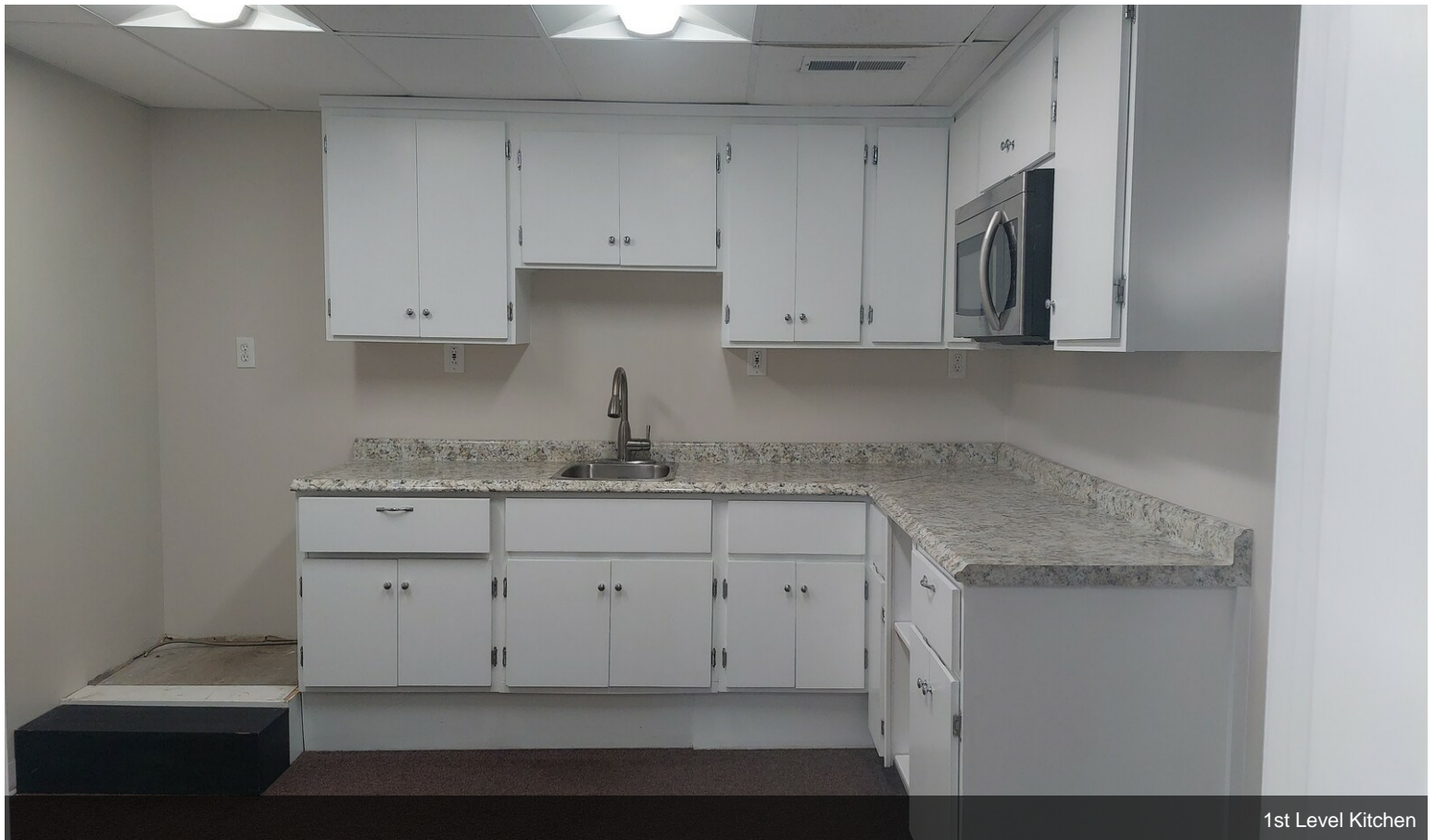
227 Garfield Ave, Woburn, MA 01801

2023 Renovation of Flex space on two levels (Office, Fitness, Health & Wellness). Main level reception, plank flooring, LED ceiling lighting and two private restrooms. First level has kitchen with direct entry from parking area and at door parking. Adjacent to and across from Winchester Tennis Club.

Property Photos



Main Level Office



1st Level Kitchen

Property Photos



Main Level Office



Main Level Office Window View

Property Photos



227 Garfield Ave Parking 2



1st Level Direct Entry