

**PRIME FIRST CLASS EXECUTIVE OFFICE  
10 CANAL PARK  
CAMBRIDGE, MA**

**Co-Broker Fee \$1.50 / SF / Yr - Lease  
Sublease to 9/30/2012**



**FOR LEASE 11,202 Sq. Ft.  
At Cambridgeside Galleria**

**Reduced to \$25.00 / sf Gross plus lights & plugs - including executive furniture**

Heavily air conditioned server room, conference rooms, kitchenette

Public transportation, garage parking

Across the river from Mass General Hospital, adjacent to Museum of Science

Across from North Point Towers, access to tour boats, water taxi

Shops, restaurants, hotels

**For information and sample floor plans please check our web site  
[www.wronkaltd.com](http://www.wronkaltd.com):**

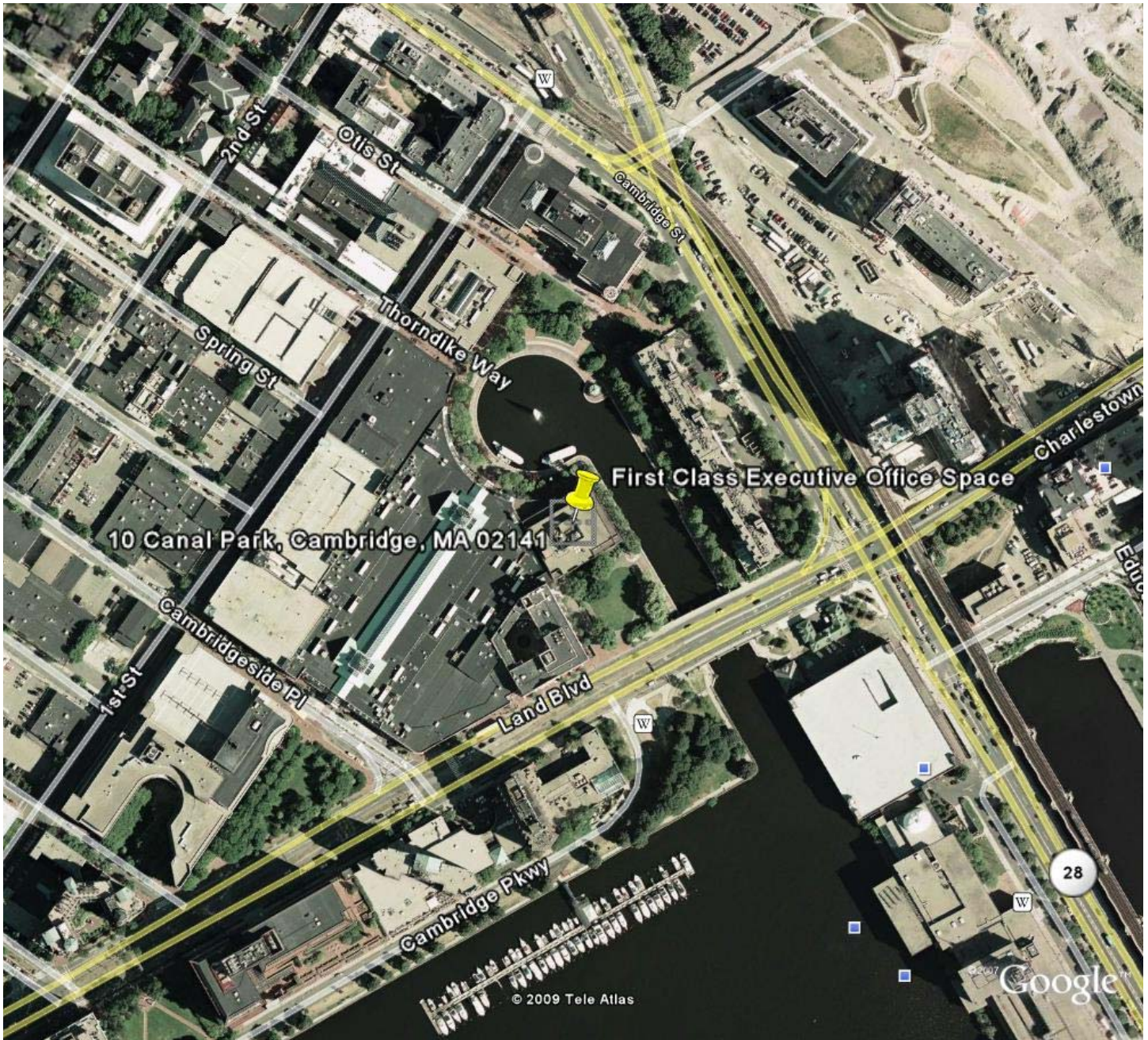
**To schedule a tour and information on other properties, please contact us at  
781-229-2233**



**25 Burlington Mall Rd. Ste 300, Burlington MA 01803**

All information furnished regarding property for sale or lease is from sources deemed reliable, but no warranty of representation is made as to the accuracy thereof and same is submitted subject to errors, omissions, change of price, rental or other conditions, prior sale or lease, or withdrawal without notice.

10 Canal Park, Cambridge MA

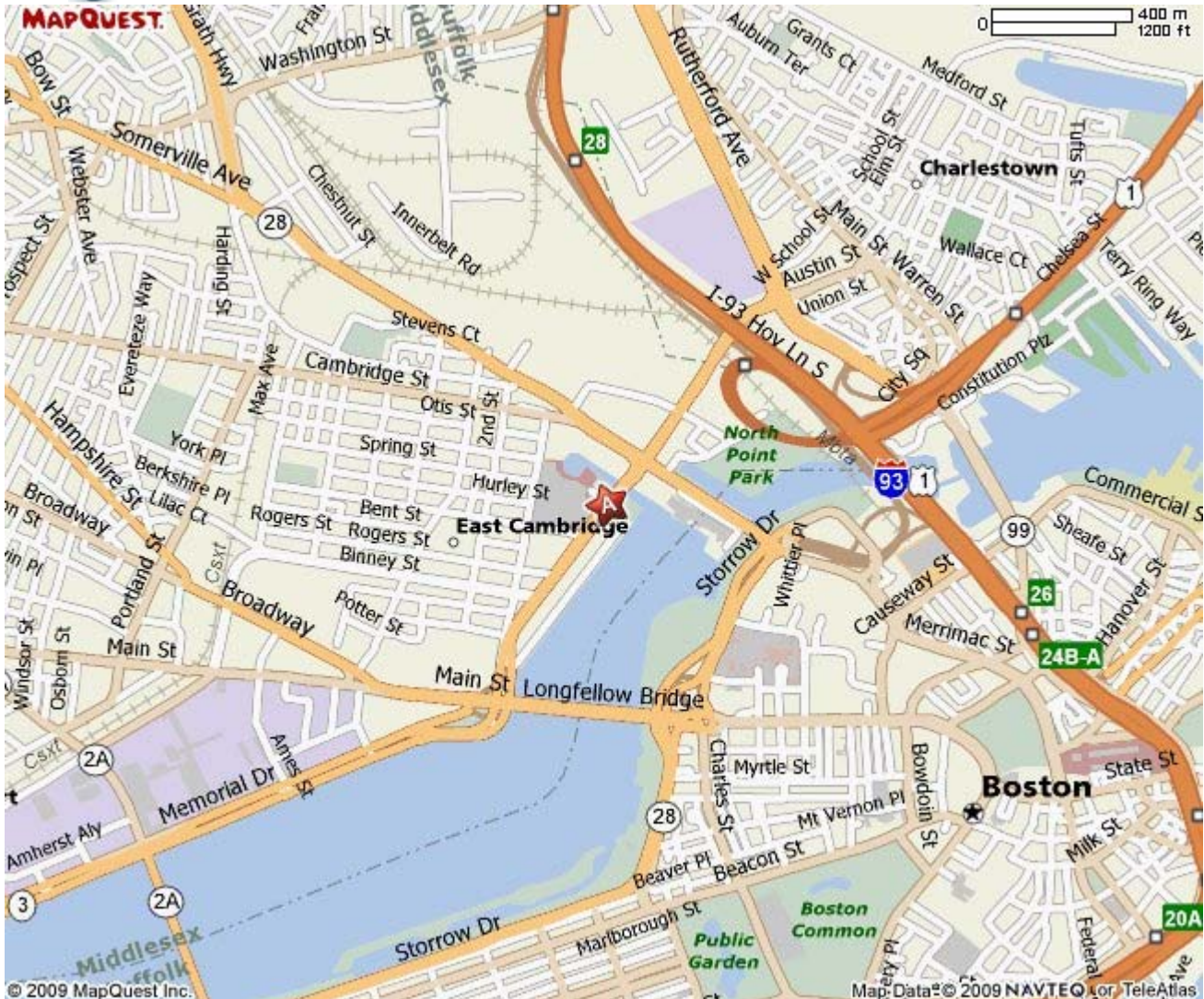


Wronka, Ltd. Commercial Real Estate Advisors  
25 Burlington Mall Rd., Ste 300  
Burlington, MA 01803  
781-229-2233  
www.wronkaltd.com

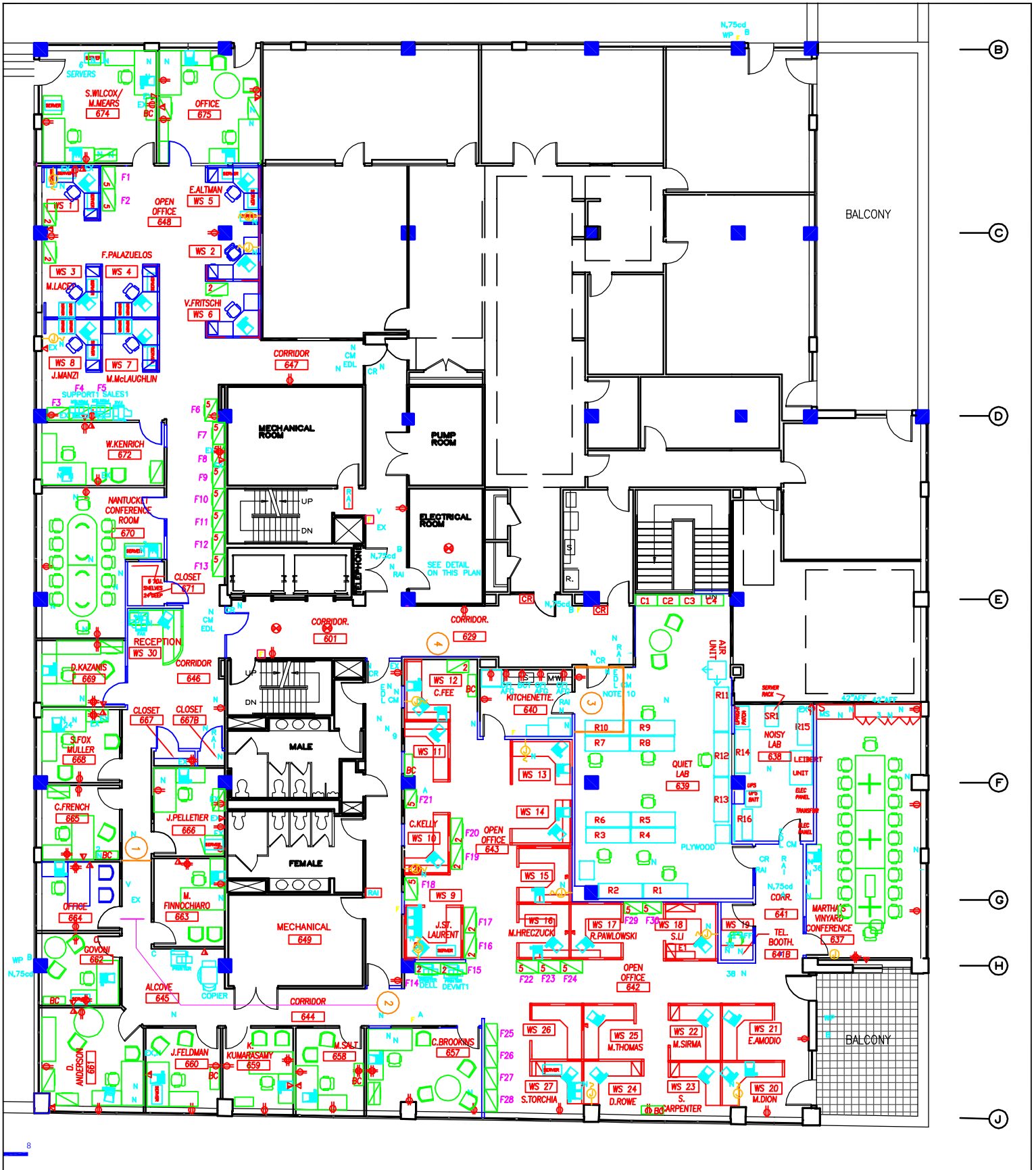
## A: 10 Canal Park, Cambridge, MA 02141-2249



Need help on the go? Get Voice Activated Directions for free. Call **1-800-FREE411** (1-800-373-3411).



All rights reserved. Use subject to License/Copyright Map Legend  
Directions and maps are informational only. We make no warranties on the accuracy of their content, road conditions or route usability or expeditiousness. You assume all risk of use. MapQuest and its suppliers shall not be liable to you for any loss or delay resulting from your use of MapQuest. Your use of MapQuest means you agree to our [Terms of Use](#)



**fox**  
 FOX RELOCATION  
 MANAGEMENT CORP.  
 2 Oliver Street  
 Boston, MA 02109  
 617.946.2400  
 fax 617.946.2414  
 www.foxcorp.com  
 BOSTON · PROVIDENCE  
 WASHINGTON, DC · NEW YORK

DRAWING TITLE:

**VERTICAL**

PROJECT:

**6th Floor  
 10 Canal Park  
 Cambridge, MA**

SCALE: N.T.S.

DATE: 9-23-08

DRAWING NO.:  
**MP-1**